

EMPOWER YOUR NETWORK

GEO-LOCATION WITH SUBSCRIBER-BASED INTELLIGENCE

Based on breakthrough research in Chaos Theory originating from MIT, Groundhog Technologies presents CovMo™ – our vanguard system for Geo-location, and the mobile operator's preeminent choice. We aim to resolve the multitude of challenges facing customer experience management and network optimization today. CovMo™ pinpoints user equipment locations network-wide, 24x7, and accurately maps the radio conditions that cause poor user experience for every device in the network. Today, leading operators with more than one billion subscribers rely on CovMo™ for the most efficient resolution of network issues!

FEATURES



Over 150 KPIs with geographical insight revealing previously hidden issues such as the specific locations of silent calls.



Advanced filters to distinguish between indoor-and-outdoor, and moving-and-stationary traffic.



Geo-location with various VIP and group SLA applications allowing the operator to understand subscriber's service quality.



Sophisticated event and KPI visualization with multi-map comparison features facilitating the network diagnostics of any location.



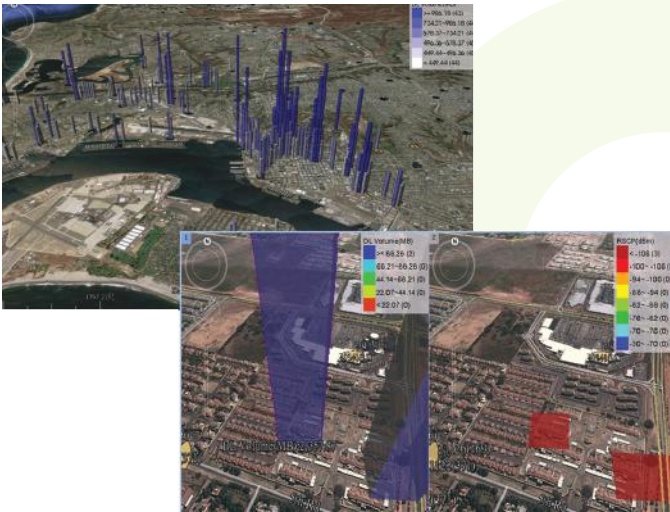
Automatic cell optimization features for optimizing neighbor relations, antenna azimuth and tilt, and much more.



Multi-vendor end-to-end call trace support.

BENEFITS

- Geo-location with proven superior accuracy, providing value across departments from RAN planning and optimization to customer service and marketing; resulting in unsurpassed ROI potential.
- Improved Quality of Service through accelerated troubleshooting, optimization, and new solution deployments (Wi-Fi calling, LTE/LTE-A, NB-IoT, 5G) based on identified hotspots.
- Significantly reduced reliance on time-consuming and costly drive testing.
- Flexibility through advanced and easily customizable Geo-APIs to enhance other systems; such as CEM, probes, customer care, and apps.
- Ready to integrate with other OSS/BSS system; such as DPI (analysis for APN, user plane KPIs, etc) and Advanced SON (CCO, MRO, MLB, etc)

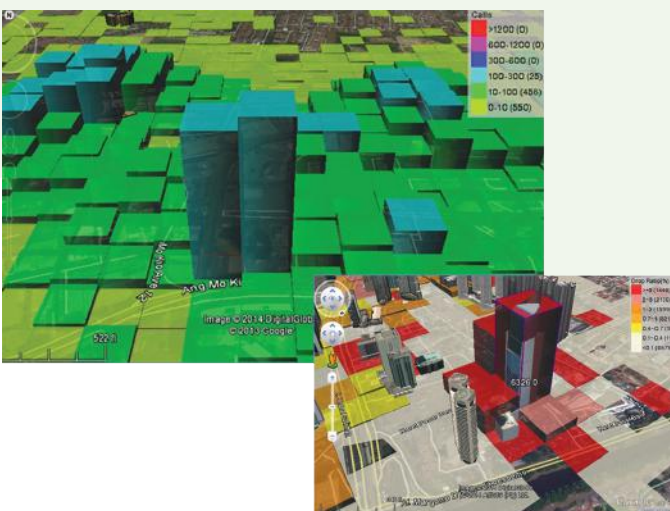


ASSESSMENTS BASED ON LIVE DATA

CovMo™ reveals coverage and capacity deficiencies in strategic locations (pictured left: hotspots). Advanced filtering capabilities allow users to adjust equations, adding parameters to create queries in several clicks. CovMo™ performs especially well in urban areas with a large number of samples, as opposed to conventional propagation models which are inaccurate in urban environments. CovMo™ uses call trace data available from OSS to geo-locate every subscriber, call, and event; without GPS, UE-application software, or drive tests.

BIG DATA ANALYTICS PLATFORM

CovMo™ is a cloud-based platform that allows any authorized user access through a web browser. The system's big data analytical capabilities permit users to monitor trends, changes and shocks in movement patterns that occur in the network. CovMo™ visualizes various geo-located KPIs such as roamers at special events, and other on-demand inquiries in near real-time in intuitive and interactive reports.



INSIGHT INTO NEW SERVICES AND NEEDS

CovMo™ offers unprecedented geographical and technical insight into 15 service types across technologies. This enables the support of various subscriber-oriented analysis in mobile network for different features; such as identifying locations of VoLTE call, SRVCC, and Advanced Carrier Aggregation. Furthermore, it supports network planning and optimization with the introduction of new services (NB-IoT, 5G). CovMo™ instantly identifies and isolates device incompatibilities and RRC layer design faults.

